



# App **myVanvitelli** – Frequency detection

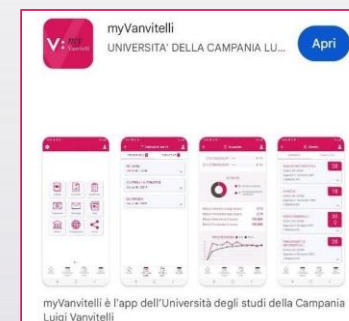
## Guide for students

## New myVanvitelli app feature: frequency detection

Using this functionality, a student can mark his/her attendance at lessons by obtaining the attendance requirements foreseen in his/her study path.

- **The new functionality is accessible**

- By downloading/updating the myVanvitelli application from the IOS and Android stores
- by accessing the address from a browser <https://unicampania-pwa.app.cineca.it/>

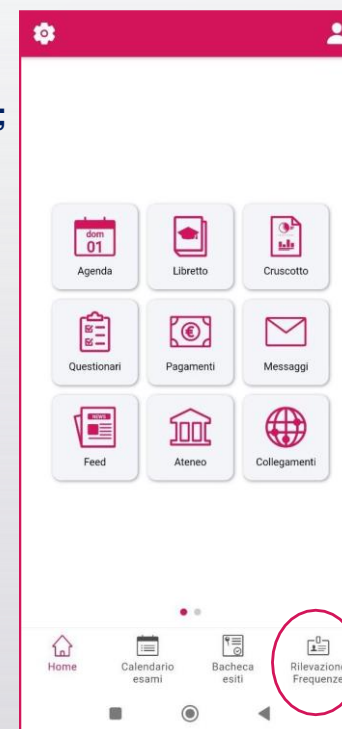


In any case, login takes place using the usual credentials of the University's centralized authentication system



## Actions available

- **The student has the following actions available:**
  - **enter the marking using the unique code provided by the teacher in the classroom;**
  - **confirm presence** when the teacher, using a specific function of the application, requests to confirm presence in the classroom within a short period of time;
  - **view the history** of markings and other information useful for verifying, in real time, the course attendance status.

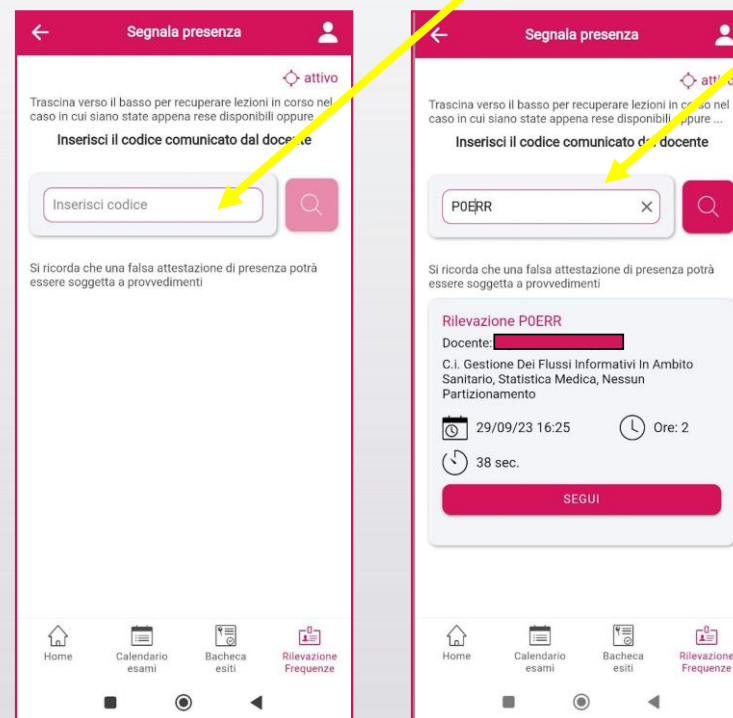




## Presence marking

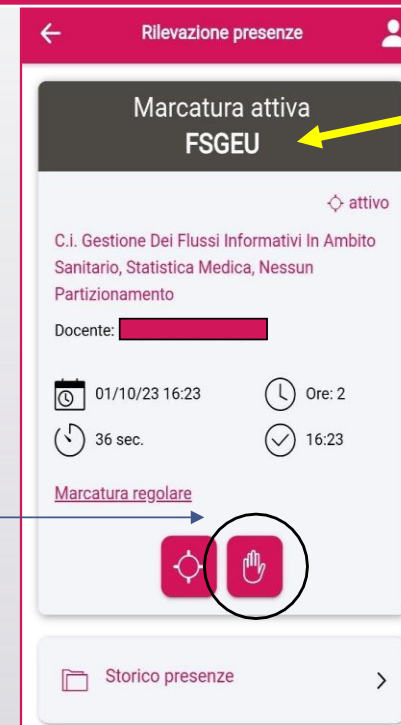
ENTER THE CODE  
COMMUNICATED BY  
THE TEACHER

- The student can mark their attendance by entering the unique code that the teacher provides in the classroom in the appropriate box (extra-app).
- When the app is started, the student will be able to choose whether or not to enable geolocation of the device so that the teacher can have clear indications on the student's position. In the absence of such activation, the presence can still be marked and the teacher can implement, if deemed appropriate, further verification measures.



## Confirmation of presence

- During the lesson the teacher can start a procedure to verify and confirm presence. This procedure provides a limited time frame within which the student can actually confirm their presence using the appropriate function.



## Attendance history

- The student can access the register to view the history of attendance marked in the courses followed.

It is possible to obtain reports by date, course and calendar year in order to simplify the search.

